

# CERTIFICATE OF LOCATION OF GOVERNMENT CORNER

NORTH QUARTER Corner of Section 20, Township 108, Range 41, 5TH P.M.

STATE OF MINNESOTA, County of MURRAY

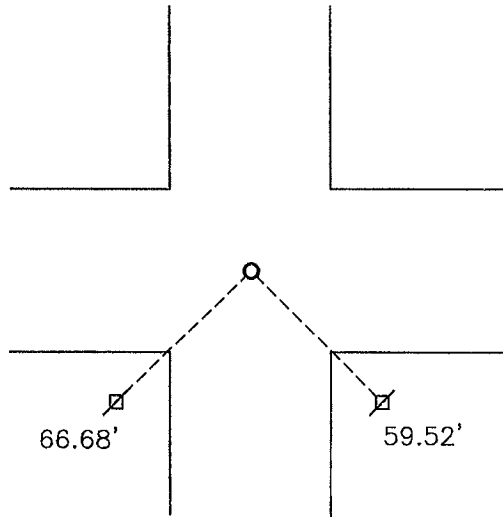
At the corner location shown on the sketch:

On 06-06-2008 found a 3/8" IRON  
DATE

left monument as found,  lowered monument,  removed monument (explain)

On 08-21-2008 placed a SURVEY SPIKE WITH SEAL #43844  
DATE

### SKETCH OF REFERENCE TIES



Minnesota State Plane Coordinate  
System Murray County Datum  
NAD83 (1996)

N: 211044.986  
E: 492686.992

Nail and bottle cap in power pole SW 66.68'  
Nail and bottle cap in power pole SE 59.52'

Statement of evidence relative to this corner location is on back of page.

I hereby certify that this document and the data contained herein was prepared by me or under my direct supervision.

*James V. Johnson* 1/29/09  
SIGNATURE DATE

Registration No. 43844

Land Surveyor,  Professional Engineer  
 County Surveyor,  County Engineer

OFFICE OF THE COUNTY RECORDER  
County of

I hereby certify that this document was filed in the Co. Recorders office at \_\_\_\_\_ .M on the \_\_\_\_\_ day of \_\_\_\_\_ A.D. 20 \_\_\_\_\_

County Recorder *James V. Johnson*  
By \_\_\_\_\_, Deputy

DOCUMENT NO. JUL 10 2009

## Statement of Evidence

In 1861, L. G. M. Fletcher did the original subdivision of the township.

On June 15, 1915, J. R. Johnston, Murray County Surveyor, set a stone equal distance and on line between the section corners.

On June 6, 2008, Bueltel-Moseng Land Surveying dug by hand and found a  $\frac{3}{8}$ " iron. We did not find anything else. It fell 1.5'± east of midway and on line.

On August 21, 2008, Bueltel-Moseng Land Surveying set a survey spike with seal #43844 at the road surface, after overlay was done.